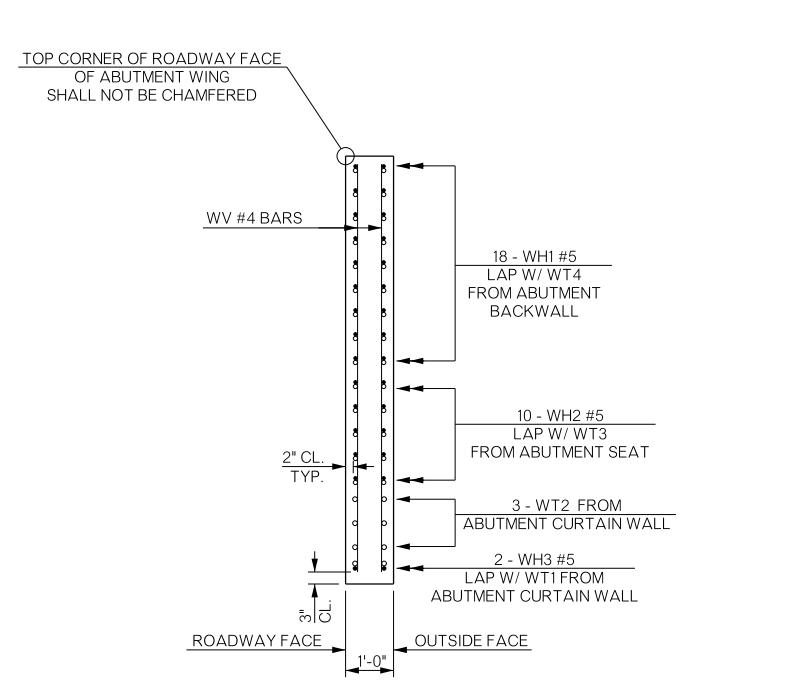
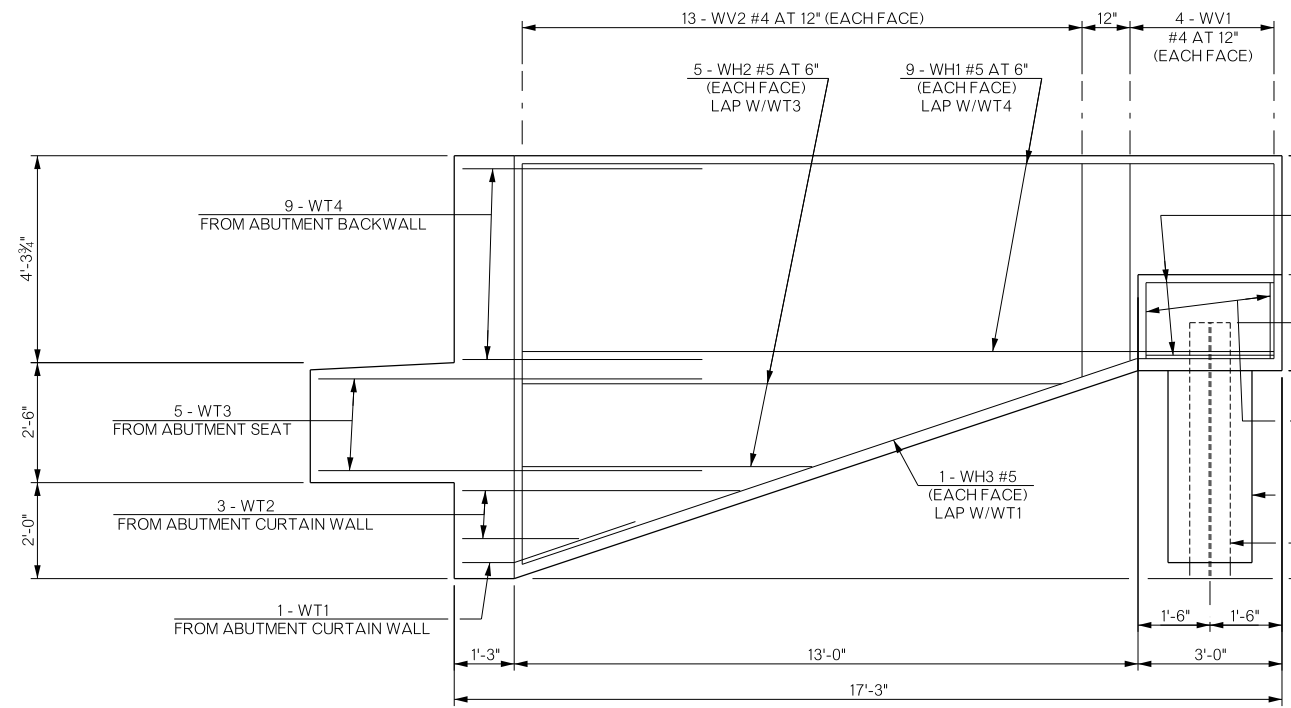


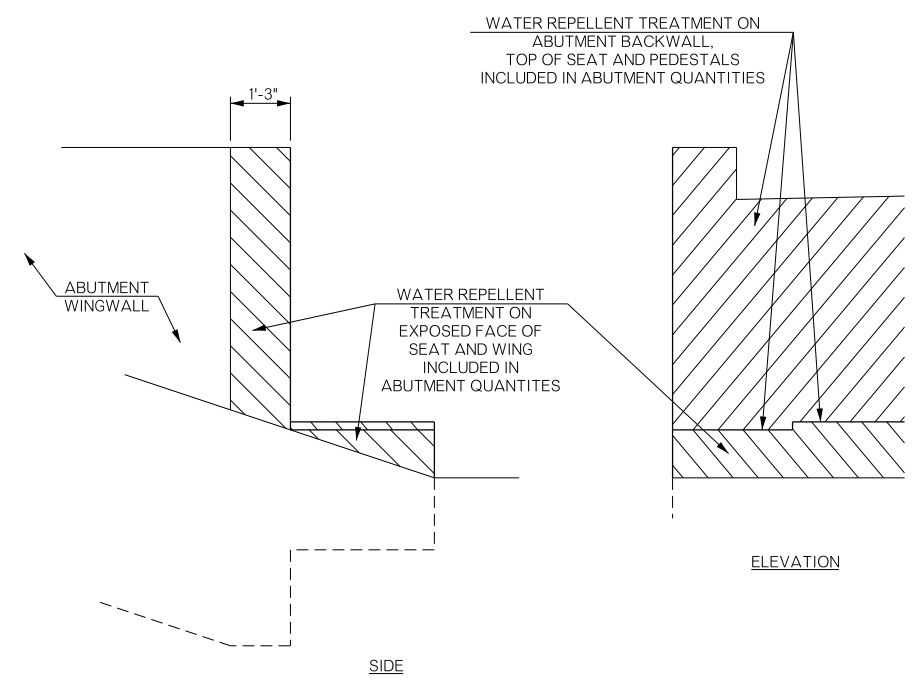
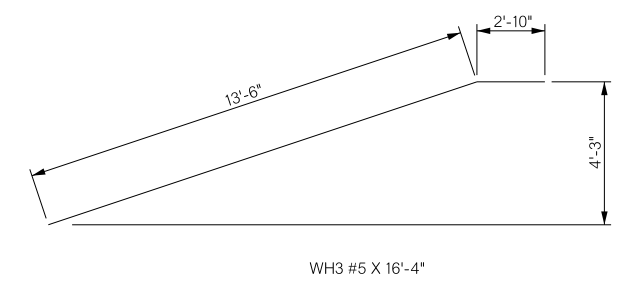
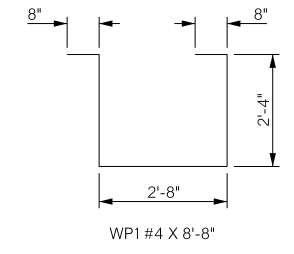
REVISIONS		
REV. NO.	DESCRIPTION	DATE



SECTION THRU WING AT BACK FACE OF ABUTMENT SEAT



WING ELEVATION



WATER REPELLENT TREATMENT DETAILS

ABUTMENT WING BAR LIST (ONE SHOWN, FOUR REQUIRED)					
MARK	SIZE	NO.	FORM	LENGTH	LENGTH VARIATION
EPOXY COATED REINFORCING					
WT1	#5	1	BNT.	8'-2"	
WT2	#5	3	BNT.	8'-8" AVG.	5'-8" TO 11'-8"
WT3	#5	5	BNT.	16'-8"	
WT4	#5	9	BNT.	10'-8"	
WH1	#5	18	STR.	15'-8"	
WH2	#5	10	STR.	8'-7 1/2" AVG.	5'-9" TO 11'-6"
WH3	#5	2	BNT.	16'-4"	
WV1	#4	8	STR.	4'-2"	
WV2	#4	26	STR.	6'-4 1/2" AVG.	4'-5" TO 8'-4"
WP1	#4	3	BNT.	8'-8"	
WP2	#4	4	STR.	1'-7"	

ABUTMENT NO. 1 QUANTITIES					
ITEM	UNIT	PHASE I	PHASE II	TOTAL	
SUBSTRUCTURE EXCAVATION COMMON	C.Y.	44.00	36.00	80.00	
CLSM	C.Y.	44.00	36.00	80.00	
CLASS A CONCRETE	C.Y.	20.30	17.40	37.70	
MECHANICAL SPLICES	EA.	24.00	0.00	24.00	
EPOXY COATED REINFORCING STEEL	LB.	2,620.00	2,290.00	4,910.00	
PILES, FURNISHED (HP10X42)	L.F.	40.00	40.00	80.00	
PILES, FURNISHED (HP12X53)	L.F.	180.00	144.00	324.00	
PILES, DRIVEN (HP10X42)	L.F.	40.00	40.00	80.00	
PILES, DRIVEN (HP12X53)	L.F.	180.00	144.00	324.00	
WATER REPELLENT (VISUALLY INSPECTED)	S.Y.	21.00	17.20	38.20	
6" PERFORATED PIPE UNDERDRAIN ROUND	L.F.	23.00	19.00	42.00	
6" NON-PERF. PIPE UNDERDRAIN RND.	L.F.	50.00	0.00	50.00	

ABUTMENT NO. 2 QUANTITIES					
ITEM	UNIT	PHASE I	PHASE II	TOTAL	
SUBSTRUCTURE EXCAVATION COMMON	C.Y.	44.00	36.00	80.00	
CLSM	C.Y.	44.00	36.00	80.00	
CLASS A CONCRETE	C.Y.	20.30	17.40	37.70	
MECHANICAL SPLICES	EA.	24.00	0.00	24.00	
EPOXY COATED REINFORCING STEEL	LB.	2,620.00	2,290.00	4,910.00	
PILES, FURNISHED (HP10X42)	L.F.	40.00	40.00	80.00	
PILES, FURNISHED (HP12X53)	L.F.	180.00	144.00	324.00	
PILES, DRIVEN (HP10X42)	L.F.	40.00	40.00	80.00	
PILES, DRIVEN (HP12X53)	L.F.	180.00	144.00	324.00	
WATER REPELLENT (VISUALLY INSPECTED)	S.Y.	21.00	17.20	38.20	
6" PERFORATED PIPE UNDERDRAIN ROUND	L.F.	23.00	19.00	42.00	
6" NON-PERF. PIPE UNDERDRAIN RND.	L.F.	50.00	0.00	50.00	

BRIDGE "B"	COMANCHE COUNTY	DESIGN	MLC	06/16
U.S.-277 OVER SNAKE CREEK		DETAIL	VNT	06/16
DETAILS OF WINGS (ABUTMENTS NO. 1 & 2)		CHECK	DAH	04/17
		SQUAD: HARJO	ENGR: MOLLA-ESMAIL	
STATE OF OKLAHOMA	DEPARTMENT OF TRANSPORTATION	JOB/PIECE NO. 27968(04)	SHEET NO. B015	